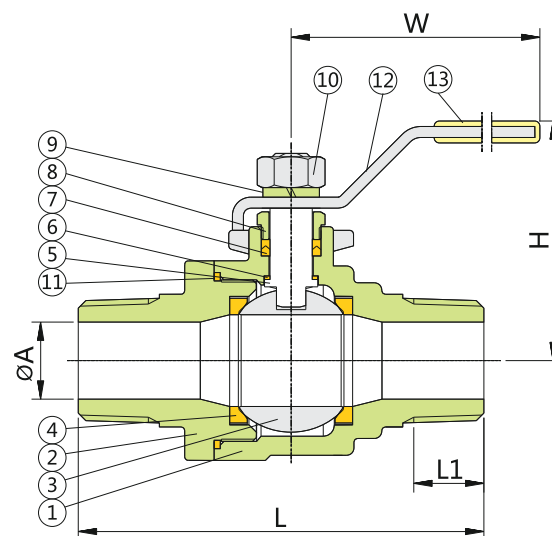


- BLOW-OUT PROOF STEM
- WORKING PRESSURE(CWP) :DN8~DN50 1000psi
- TEMPERATURE RANGE: -20 to 180°C
- END CONNECTIONS:MALE END
- LOCKING DEVICE
- PIPE THREAD IN ACCORDANCE
ANSI B1.20.1(NPT)
DIN 259/DIN 2999
ISO 228
BSP
PT



MATERIALS LIST

| NO. | PART NAME | MATERIAL | QTY |
|-----|----------------|----------|-----|
| 1 | BODY | 1.4408 | 1 |
| 2 | END CAP | 1.4408 | 1 |
| 3 | BALL | CF8M | 1 |
| 4 | SEAT | PTFE | 2 |
| 5 | STEM | SS316 | 1 |
| 6 | THRUST WASHER | PTFE | 1 |
| 7 | STEM PACKING | PTFE | 1 |
| 8 | GLAND NUT | SS304 | 1 |
| 9 | HANDLE WASHER | SS304 | 1 |
| 10 | HANDLE NUT | SS304 | 1 |
| 11 | BODY SEAL | PTFE | 1 |
| 12 | HANDLE | SS304 | 1 |
| 13 | HANDLE COVER | PLASTIC | 1 |
| 14 | LOCKING DEVICE | SS304 | 1 |

DIMENSIONS

unit:mm

| SIZE | DN | ØA R | ØA B | L | L1 | H | L1 |
|--------|----|------|------|-----|----|------|-----|
| 1/4" | 8 | 8.5 | 8.5 | 69 | 12 | 50.0 | 104 |
| 3/8" | 10 | 9.0 | 9.0 | 71 | 12 | 50.0 | 104 |
| 1/2" | 15 | 11.6 | 15.0 | 79 | 15 | 56.5 | 123 |
| 3/4" | 20 | 14.5 | 20.0 | 94 | 18 | 60.5 | 123 |
| 1" | 25 | 20.0 | 25.0 | 106 | 20 | 69.3 | 145 |
| 1-1/4" | 32 | 25.0 | 32.0 | 122 | 22 | 76.0 | 145 |
| 1-1/2" | 40 | 32.0 | 38.0 | 142 | 25 | 84.5 | 189 |
| 2" | 50 | 38.0 | 50.0 | 168 | 28 | 95.0 | 189 |

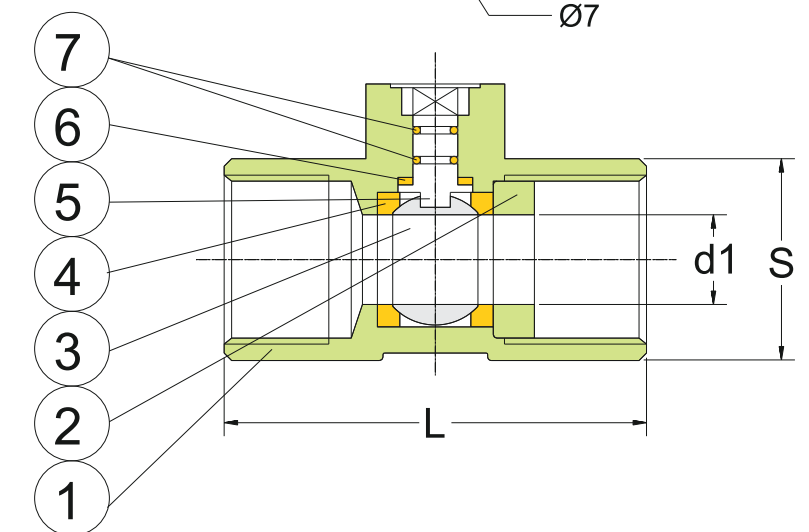
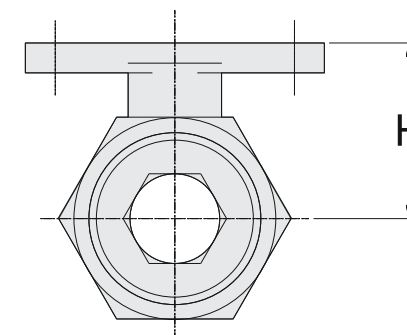
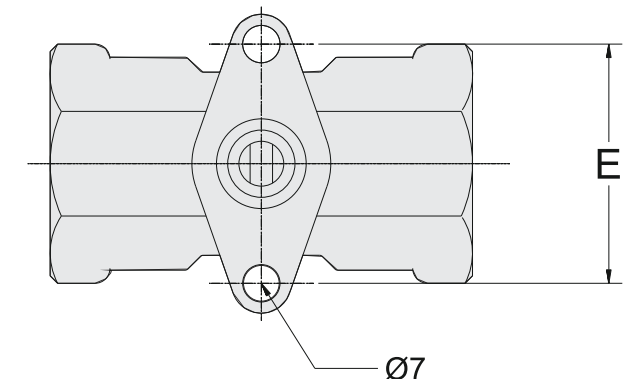
ØAR:Reduced bore
ØAB:Full bore

- BLOW-OUT PROOF STEM
- WORKING PRESSURE(CWP) :
DN8~DN50 1000psi (PN 63bar)
- TEMPERATURE RANGE: -20 to 180°C
- PIPE THREAD IN ACCORDANCE
ANSI B1.20.1(NPT)
DIN 259/DIN 2999
ISO 228
BSP
PT



MATERIALS LIST

| NO | PART | MATERIAL | QTY |
|----|---------------|----------|-----|
| 1 | BODY | SUS 316 | 1 |
| 2 | CAP | SUS 316 | 1 |
| 3 | BALL | SUS 316 | 1 |
| 4 | SEAP | PTFE | 1 |
| 5 | THRUST WASHER | PTFE | 1 |
| 6 | STEM | SUS 316 | 1 |
| 7 | O RING | VITON | 2 |



DIMENSIONS

unit:mm

| SIZE | d1 | L | H | E | S |
|--------|------|------|------|------|----|
| 1/4" | 5.0 | 39.0 | 26.0 | 38.5 | 17 |
| 3/8" | 7.2 | 44.0 | 27.0 | 38.5 | 19 |
| 1/2" | 9.2 | 56.5 | 26.5 | 38.5 | 25 |
| 3/4" | 12.5 | 59.0 | 28.5 | 38.5 | 32 |
| 1" | 15.0 | 71.0 | 32.5 | 38.5 | 38 |
| 1-1/4" | 20.0 | 78.0 | 36.0 | 38.5 | 49 |
| 1-1/2" | 25.0 | 83.0 | 41.5 | 38.5 | 53 |
| 2" | 32.0 | 100 | 47.0 | 38.5 | 64 |